



CASE STUDY

E+H increases the speed of document creation by 70%



Company:

E+H Rechtsanwälte GmbH



Website:

<https://www.eh.at/>



Industry:

Law firm



Country:

Austria



Social Media:

 [LinkedIn](#)

 [Instagram](#)

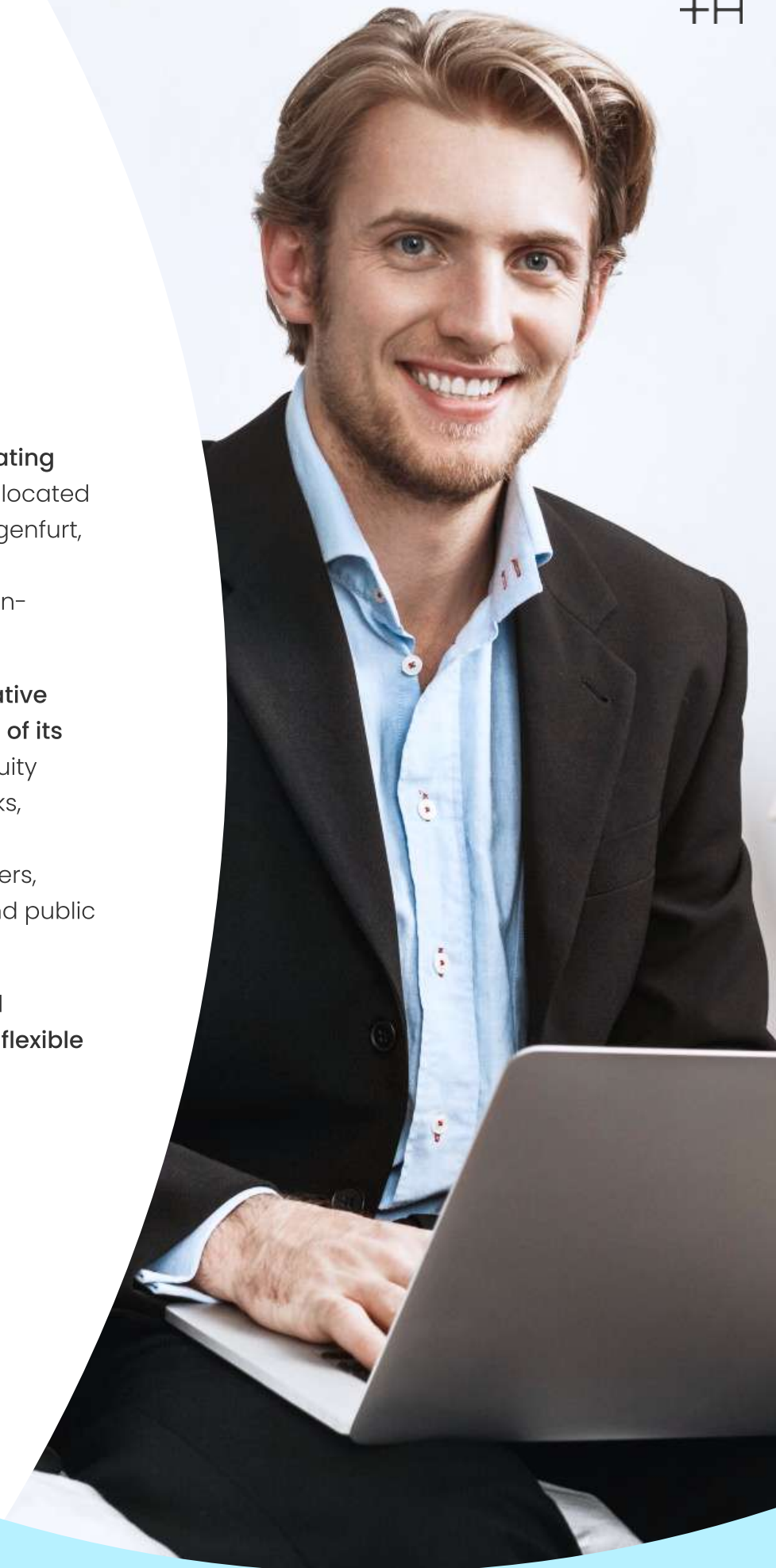
 [Facebook](#)

Company profile

E+H is an Austrian law firm operating worldwide. Its team of lawyers is located in offices in Vienna, Graz and Klagenfurt, and Brussels. The firm combines outstanding legal expertise with in-depth business knowledge.

E+H specialises in finding innovative solutions to the legal challenges of its clients, which include: private equity firms and investment funds, banks, insurance companies, industrial companies, infrastructure providers, large commercial companies and public companies.

The company is highly agile and innovative, with an efficient and flexible corporate culture.



“The most attractive feature of Bigle Legal is the ability for the user to do 100% of the automation themselves”

Mathias Knafl, Knowledge Manager of E+H



The challenge

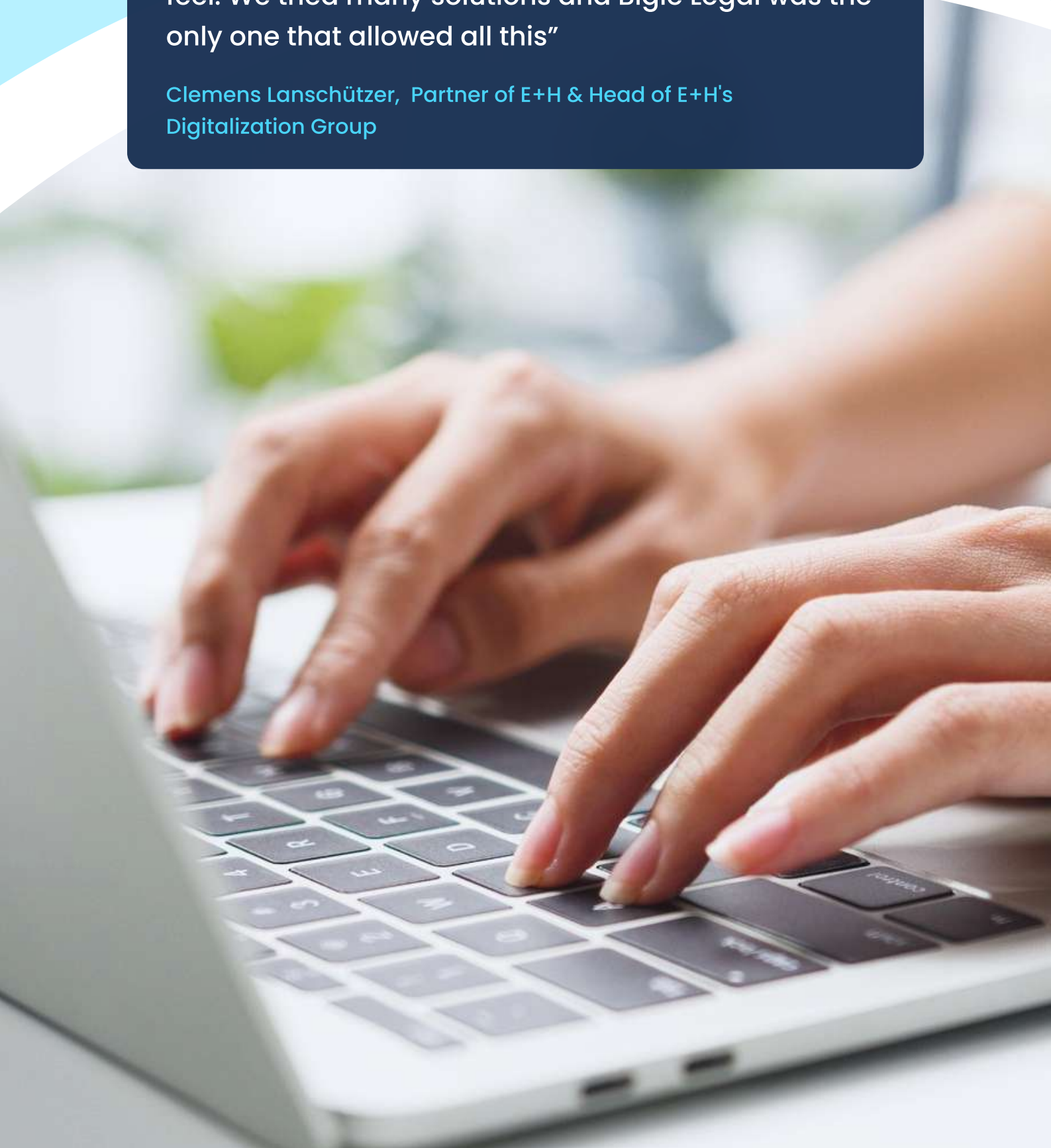
E+H had two main challenges:

1 They needed to **streamline the creation of corporate documents**, which are standard documents related to company law and which are required on an ongoing basis, such as filings with the Austrian Commercial Register, shareholder resolutions, and articles of association.

2 They were looking for a tool that would allow them to create the **first drafts of more complex agreements**.

“For us, the documents we produce in our law firm and share with clients and other stakeholders are our business cards, so we needed a solution to create documents while preserving our format and look and feel. We tried many solutions and Bigle Legal was the only one that allowed all this”

Clemens Lanschützer, Partner of E+H & Head of E+H's
Digitalization Group



The path to success

E+H started its journey towards document automation by contacting Bigle Legal, which it met through **Vienna Legaltech LTHE's accelerator programme**, in which Bigle Legal was a winner.

The E+H team has an open approach to legal technology, from partner to associate level. As a founding member of the LTHE, **E+H is constantly exploring the market for new solutions** that will help them deliver the highest quality legal services.

Once the Bigle Legal platform was selected, **E+H received comprehensive online training** covering the necessary Document automation skills and the creation of templates within the platform.

In the next phase, E+H had to automate a set of documents before launching Bigle Legal internally, so adoption took some time. However, **speed improved as E+H got used to the platform.**

As soon as a basic structure was mapped out, Bigle Legal's copy and paste functionalities allowed them to greatly speed up the creation of templates. **After that, it was basically learning by doing.**

It is worth mentioning that although digital innovation is a priority for E+H, the leap from traditional processes to the use of innovative technology was not an immediate path, as it is related to cultural change. E+H found that it takes some time to break old routines. To speed up this process, **E+H will include Bigle Legal in the onboarding of new employees.**

“The teleconferences and online trainings with Bigle Legal's customer service team made us realise the importance of learning more about how to use the platform to increase results”

Mathias Knafli, Knowledge Manager of E+H



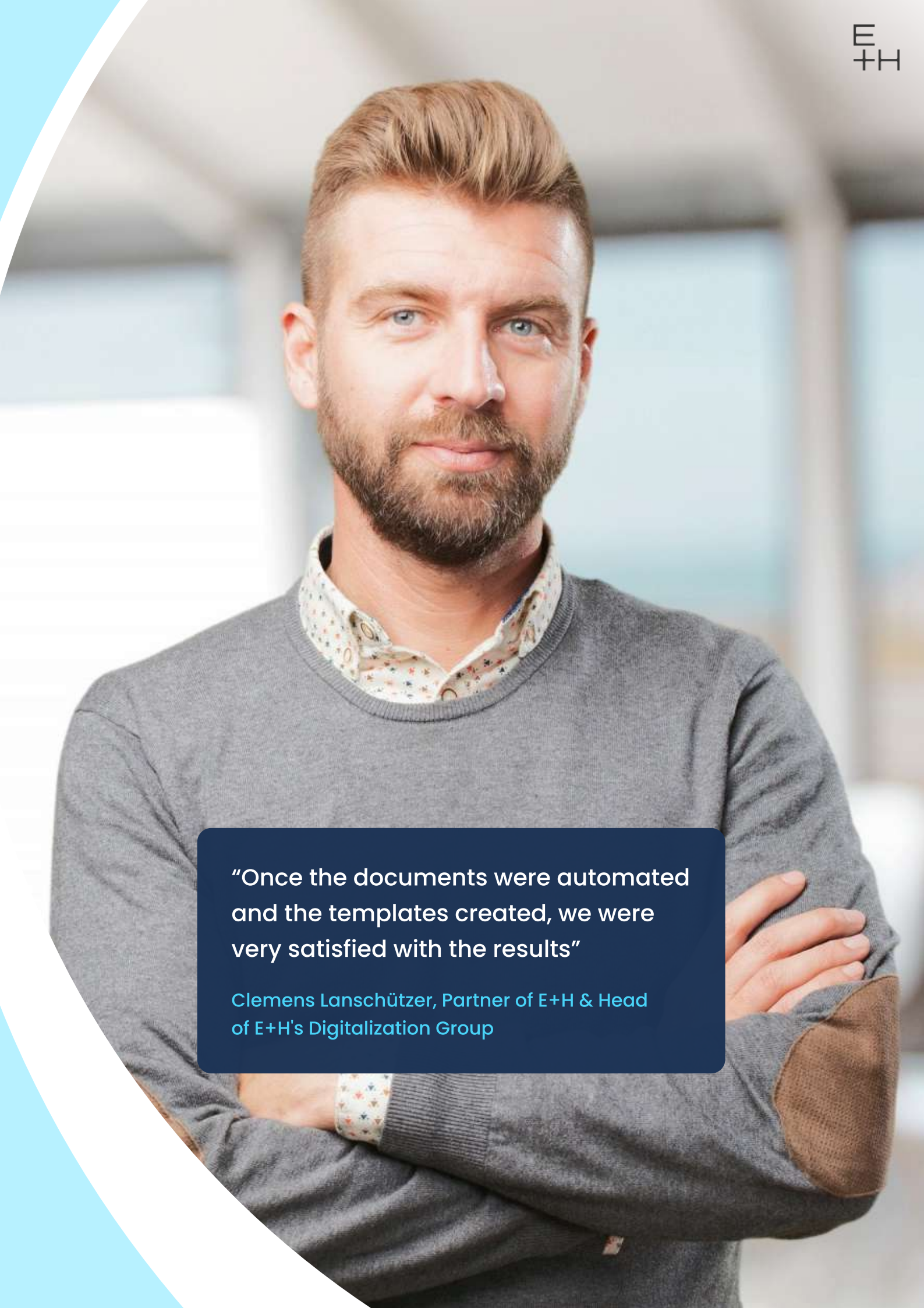
Results

With Bigle Legal, we can create a first draft 40% to 70% faster, depending on the complexity of the document and the user's familiarity with the platform and document content.

One big change is that our junior associates who are assigned to create the first drafts of a standard document do not have to ask for precedents for proper drafting, as the drafting is already reflected in the templates we have created through Bigle Legal. These templates reflect the firm-wide experience of best practices on a day-to-day basis.

Senior associates and lawyers also save time in double-checking documents drafted by junior associates, as everyone can be sure that the content of documents created through Bigle Legal is up to date and well checked.

The most attractive feature of Bigle Legal is the ability for the user to do 100% of the automation themselves. Once you understand how the platform works, you don't need to go to Bigle Legal for automation. When there are any issues with the platform, we are always amazed at how quickly Bigle Legal's customer service resolves them.

A portrait of Clemens Lanschützer, a man with short brown hair and a beard, wearing a grey sweater over a patterned shirt. He is standing with his arms crossed in a modern office setting with large windows in the background. A dark blue rounded rectangle is overlaid on the bottom left of the image, containing a quote and his name.

“Once the documents were automated
and the templates created, we were
very satisfied with the results”

Clemens Lanschützer, Partner of E+H & Head
of E+H's Digitalization Group

About Bigle Legal

Bigle Legal is a cloud-based Contract Lifecycle Management (CLM) software powered by Artificial Intelligence that automates the legal operations of companies, improving security and minimising the risk of legal contingencies. The platform is flexible, intuitive and provides full control over the entire document lifecycle.

The company is a pioneer in the field of no-code document automation, with a global presence, and its customers include large companies and large law firms. Bigle Legal's mission is to make Legal Operations Easy.

To learn more about Bigle Legal, visit the website: biglelegal.com

For other enquiries, please contact communication@biglelegal.com

By using Bigle Legal, you contribute to saving natural resources



323 million
Kg of wood



7,1 billion
Litres of water



725 million
Kg of CO²



47 million
Kg of waste